

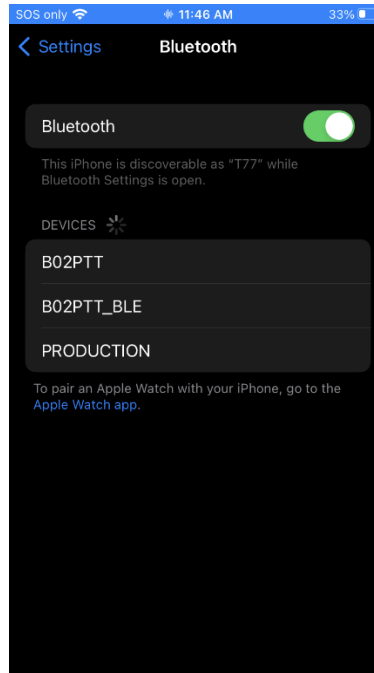
TruBlu™ iOS Quick Start Guide for Zello



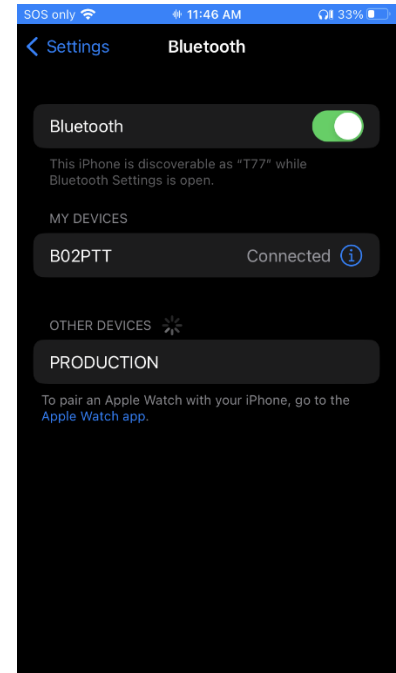
For the most up-to-date app settings and configurations, check zello.com/support.



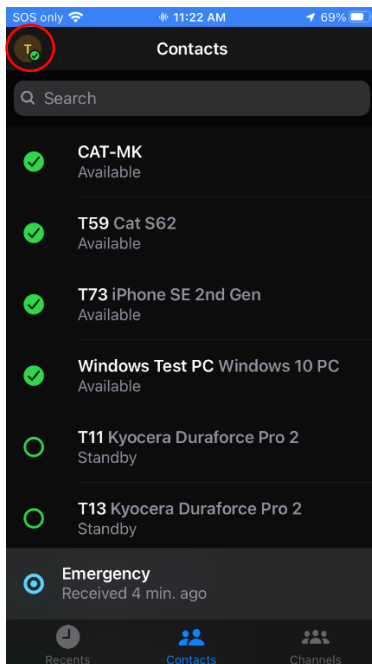
1. Ensure your **TruBlu™** microphone is powered off. Press the power button for 6 seconds. The mic will announce that it is in pairing mode. The LED will begin to alternate between blue and red.



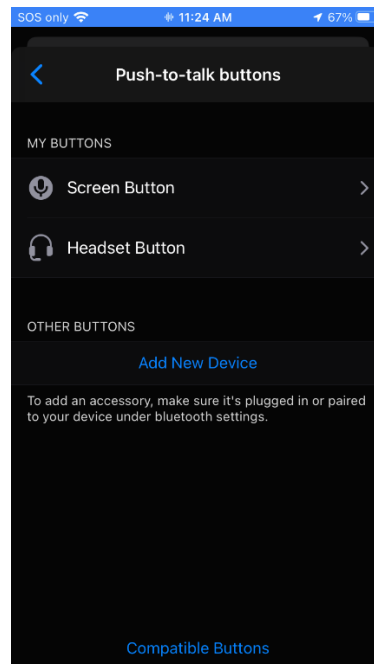
2. On your iOS device, navigate to **Settings > Bluetooth** and enable Bluetooth. Select **B02PTT**.



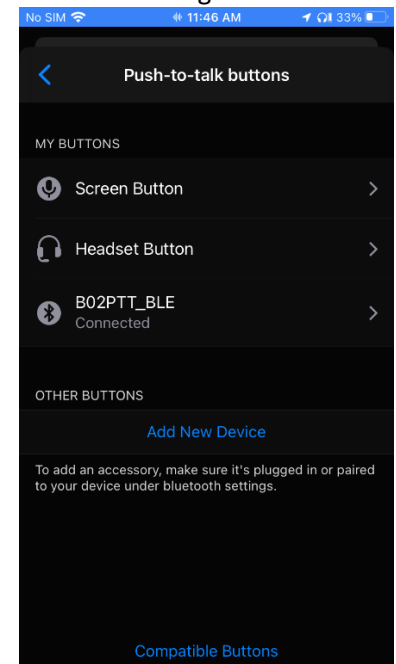
3. Once paired, the mic will announce successful pairing and connection. The LED will begin to blink blue.



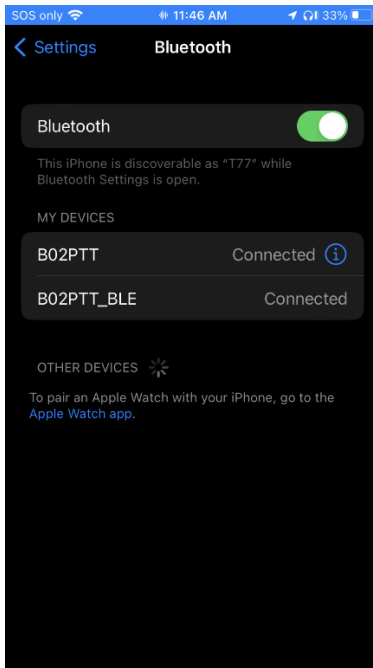
4. Open the Zello app and select the account icon in the upper-left corner.



5. Select **Settings > Push-to-Talk buttons**, then select **Add New Device**.



6. Select **B02PTT_BLE** when it appears. **B02PTT_BLE** will move up to the **My Buttons** section.
Note: Wait 30s after mapping the PTT button prior to engaging in a PTT/duplex call.



7. Return to the iOS Bluetooth settings and ensure that both **B02PTT** and **B02PTT_BLE** are connected.

Notes:

- Whenever the SM is forgotten from the device Bluetooth settings, ensure the PTT button is unmapped in the Zello settings as well.
- **Zello for Work administrators:** In the administrator portal under “Settings” -> “iOS”, disabling “Enable Bluetooth link keep-alive” can prolong the battery life of the SM.

Innovation... Quality... Passion

Designed, Assembled, Tested and Supported with Pride in the USA, at Stone Mountain we strive to provide our customers with innovative products of the highest quality, reliability and value. We welcome and appreciate your input - Feel free to contact us.

Stone Mountain, Ltd.
1597 Eagle Point Road
Huddleston, VA 24104

31Mar25

Customer Support: 540.297.6434

www.stonemountainltd.com